



Charge NY

DRIVE CLEAN REBATE

DRIVE CLEAN REBATE FOR ELECTRIC CARS

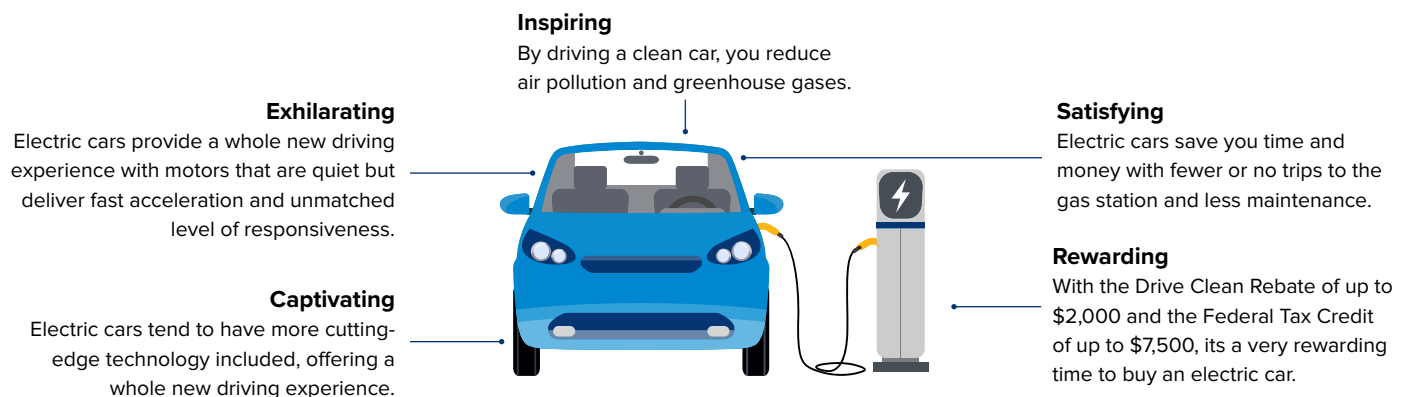
Charge NY's Drive Clean Rebate offers up to \$2,000 off the purchase or lease of a new electric car. The Drive Clean Rebate can be combined with a Federal Tax Credit of up to \$7,500. If you are a New York State resident looking for a new car, it's a great time to go electric.

How the Rebate Works

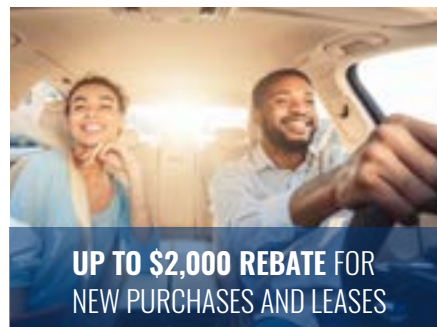
Taking advantage of the rebate is easy: Simply purchase or lease a qualifying electric car from a participating dealer. Your dealer will apply the rebate to your purchase or lease.

WHY BUY ELECTRIC?

Electric cars deliver a superior driving experience.



40+ QUALIFYING MODELS TO CHOOSE FROM



UP TO \$2,000 REBATE FOR NEW PURCHASES AND LEASES



THOUSANDS OF CHARGING STATIONS ACROSS NEW YORK STATE

Learn more: nyscrda.ny.gov/Drive-Clean-Rebate

DRIVE CLEAN REBATE-ELIGIBLE CARS



There are more than 40 plug-in electric car models that qualify for the Drive Clean Rebate to fit any style, budget or driving need. Both types of the plug-in electric cars, which consist of the plug-in hybrid and the battery-powered car, are eligible for rebates. There's no better time than now to go electric.




HOW ARE ELECTRIC CARS FUELED?

Electric car drivers have various options available to plug in and charge the car's batteries. For the majority of users, all charging needs can be fulfilled at home. If you have a battery-powered car, that means no more trips to the gas station.

The most basic charger is a standard home outlet. Simply plug in the electric car adapter provided by the manufacturer, and your car will charge. Faster residential charging stations can optionally be purchased from local retailers and installed by qualified electricians in garages or outdoors. Thousands of public charging stations throughout the State of New York help you to charge on the go.

ELIGIBLE CARS

	
BATTERY-POWERED	PLUG-IN HYBRID
Battery-powered cars have an electric motor, are only fueled by electricity, and have a long battery range.	Plug-in hybrids have an electric motor & gas engine, are fueled by electricity or gas, and have a medium battery range.

<h3>STANDARD HOME OUTLET</h3>  <p>WHEN TO USE IT</p> <p>If you drive regularly each day, you can plug your car in overnight and it will be ready by morning.</p> <p>Time to fully charge: 10 - 25+ (from fully depleted battery)</p>	<h3>RAPID HOME CHARGER</h3>  <p>WHEN TO USE IT</p> <p>If you drive multiple times a day, this type of charger helps ensure that your car is ready for each outing.</p> <p>Time to fully charge: 3-6 hours (from fully depleted battery)</p>	<h3>PUBLIC CHARGING STATIONS</h3>  <p>WHEN TO USE IT</p> <p>When you need to recharge while away from home, there are thousands of public charging stations just in New York State. There are many mobile apps available for finding charging stations.</p> <p>Time to fully charge: Varies by charger type</p>
---	---	--

New York State Energy Research and Development Authority (NYSERDA), a public benefit corporation, offers objective information and analysis, innovative programs, technical expertise, and support to help New Yorkers increase energy efficiency, save money, use renewable energy, and reduce reliance on fossil fuels. NYSERDA professionals work to protect the environment and create clean energy jobs. NYSERDA has been developing partnerships to advance innovative energy solutions in New York State since 1975. To learn more about NYSERDA's programs, visit nyserdera.ny.gov or follow us on Twitter, Facebook, YouTube, or Instagram.

Learn more: [nyserdera.ny.gov/Drive Clean-Rebate](http://nyserdera.ny.gov/Drive-Clean-Rebate)



NYSERDA